



BIJSCHOLING REGLEMENTEN

GENT, 3 November 2021

Rules Updating Presentation





FISA - Foundation

Fédération Internationale des Sociétés d'Aviron
(International Federation of Rowing Clubs)



Founded: June 25, 1892 in Turin (Italy)



Foundation Members:

- Belgium
- France
- Italy
- Switzerland
- Adriatic (is now part of Italy/Slovenia)



→ Since October 2020 : “World Rowing”



World Rowing

Members by continent

156 Members (on Jan 1, 2021)

Europe

$$46 + 0 = 46$$

Asia

$$38 + 0 = 38$$

Africa

$$33 + 0 = 33$$

North America (incl. Central America & Carribean)

$$20 + 1 = 21$$

South America

$$10 + 0 = 10$$

Oceania

$$8 + 0 = 8$$

Total:

$$155 + 1 = \underline{156}$$

World Rowing Members

number of votes (principle)

3 votes

If a federation has competed at any one or more of the following regattas: World Rowing Championships, World Rowing Under 23 Championships, World Rowing Junior Championships, Olympic Regatta or Olympic qualifying regattas and Continental Games regattas with a total of at least 12 boats during the previous four year Olympic period.

For all crews entered in the above competitions during the previous four year Olympic period, excluding mixed crews, at least 25% shall have been female crews and at least 25% shall have been male crews.

1 vote

..... of less than 12 boats ...or not fulfilling **gender %**

2021 World Rowing Executive Committee



Jean-Christophe Rolland
President - FRA



Tricia Smith
Vice President - CAN



Gert Jan Eggenkamp
Treasurer - NED



Matt Smith
Executive Director – USA/SUI



Patrick Rombaut
Commission Chair - BEL



Rosie Maygloythling
Commission Chair - GBR



Eva Szanto
Commission Chair - HUN



Frida Svensson
Athletes Commission Chair - SWE

2021 World Rowing Council

Not member of Executive Committee



Fuchs (USA)

Equipment & Technology



Lambert (BEL)

Events Promotion



Chen (USA)

Masters Rowing



Ravensbergen (NED)

Women's Rowing



Raslanas (LTU)

Youth Rowing



Batten (GBR)

Rowing for All



Cookson (CAN)

Indoor Rowing



Steinacker (GER)

Sports Medicine



Orr (CAN)

Para-Rowing



Hosobuchi (JPN)

Co-opted



Dienstbach-Wech (GER)

Co-opted



Ho (HKG)

*Cont. representative
Asia*



Garidi (ALG)

*Cont. representative
Africa*



Stadniuk (POL)

*Cont. representative
Europe*



Aguirregomezcorta (ARG)

*Cont. representative
Americas*



Spear (NZL)

*Cont. representative
Oceania*

New Executive Director



Vincent Gaillard (SUI)

Events Covered by WR

World Rowing Championships

Open
Under 23
Under 19
Indoor
Coastal (Endurance)
Beach Sprints

World Rowing Cups

World Rowing Masters Regatta

Olympic (with IOC) & Paralympic (with IPC) Regattas (incl. Qualifications)

International Regattas

International Matches (some times with extra specific Rules, cf. CDLJ)

**europaean
rowing**

The logo for European Rowing, featuring the words "europaean" and "rowing" in a bold, sans-serif font, with a blue circular graphic element to the right.

ER - Foundation

European Rowing
Working group within World Rowing
Founded: 2007


European Rowing Confederation
Independent organisation
Founded: 2018

From 1893 till 1973 : European Championships (FISA)

(World Championships in 1962-1966-1970 and than from 1974 annual)

From 2007 : European Championships (new area)

46 Members

 ALBANIA ALB	 ARMENIA ARM	 AUSTRIA AUT	 AZERBAIJAN AZE	 BELGIUM BEL	 BOSNIA-HERZEGOVINA BIH
 BELARUS BLR	 BULGARIA BUL	 CROATIA CRO	 CYPRUS CYP	 CZECH REPUBLIC CZE	 DENMARK DEN
 SPAIN ESP	 ESTONIA EST	 FINLAND FIN	 FRANCE FRA	 GREAT BRITAIN GBR	 GEORGIA GEO
 GERMANY GER	 GIBRALTAR GIB	 GREECE GRE	 HUNGARY HUN	 IRELAND IRL	 ICELAND ISL
 ISRAEL ISR	 ITALY ITA	 LATVIA LAT	 LITHUANIA LTU	 LUXEMBOURG LUX	 MOLDOVA MDA
 REPUBLIC OF NORTH MACEDONIA MKD	 MALTA MLT	 MONACO MON	 NETHERLANDS NED	 NORWAY NOR	 POLAND POL
 PORTUGAL POR	 ROMANIA ROU	 RUSSIA RUS	 SLOVENIA SLO	 SERBIA SRB	 SWITZERLAND SUI
 SLOVAKIA SVK	 SWEDEN SWE	 TURKEY TUR	 UKRAINE UKR	46 European Federations 2020	

Ryszard STADNIUK (*) (§)



Nebosja JEVREMOVIC (*)



Annamarie PHELPS (*)



Algirdas RASLANAS (°)



Patrick ROMBAUT (°)

Eva SZANTO (*)



Dusan MACHACHEK (°)



(*) Elected by ERC – (°) World Rowing representatives – (§) Chair

European Rowing Championships

Open

Under 23

Under 19

Indoor

Coastal (Endurance) (from 2022 onwards)

Beach Sprints (from 2022 onwards)

European Rowing Rules

To be adopted at General Assembly of Nov. 6 , 2021

It concerns:

DEPARTURES from the WR Rules of Racing

European Indoor Rowing Rules

European Coastal Rowing Rules

Differences:

Adding the European Events to WR Rules

Slightly different events & categories

Belgian Rowing Rules

It concerns:

DEPARTURES from the WR Rules of Racing

Specific Rules for the Belgian Regattas:

Supplementary age categories and distances

Belgian Championships

Progression system (less than 6 lanes)

Athlete licences

NO CONTRADICTION TO WORLD ROWING RULES

See presentation Chantal NEIRINCKX

Rule Books to consult

www.worldrowing.com

<https://worldrowing.com/technical/rules/2021-rule-book/>

<https://worldrowing.com/technical/rules/2021-world-rowing-rule-book-fr/>

[App:](#)

<https://worldrowing.com/2021/05/20/the-world-rowing-rule-book-app-is-now-available/>

www.rowing.be

<https://www.rowing.be/images/2021/kamprechtters/roeicodex2021.pdf>

Rule Books to consult (1)

RULES OF RACING AND RELATED BYE-LAWS

2021 Edition

Contents

PART I – SCOPE	95
PART II – ROWERS AND COXSWAINS	99
SECTION 1 – General	99
SECTION 2 – Age Groups	102
SECTION 3 – Masters	102
SECTION 4 – Coxswains	103
SECTION 5 – Lightweight	103
SECTION 6 – Para Rowing	104
PART III – BOAT CLASSES	105
PART IV – BOATS AND CONSTRUCTION	107
PART V – COURSES	108
PART VI – ORGANISATION OF REGATTAS	110
SECTION 1 – General	110
SECTION 2 – Regatta Roles	110
SECTION 3 – Commercial and Identification Provisions	111
SECTION 4 – Entries, Withdrawals and Crew Changes	112
SECTION 5 – Safety and Fairness	117
SECTION 6 – The Draw and Progressing to the Finals	119
SECTION 7 – Sanctions	123
SECTION 8 – The Start	125
SECTION 9 – During the Race	127
SECTION 10 – The Finish	128
SECTION 11 – Objections, Protests, Outcome of Protests, Appeals and Disputes	130
SECTION 12 – Duties of the Jury	134
PART VII – ANTI-DOPING RULES	135
PART VIII – EXCEPTIONAL CASES	136
PART IX – CONCLUDING PROVISIONS	137

APPENDICES TO THE RULES OF RACING

2021 Edition

Contents

APPENDIX R1	
Bye-Law to Rule 13 – Men's and Women's Events	141
APPENDIX R2	
Bye-Laws to Rule 28 – Boats and Equipment	143
APPENDIX R3	
Bye-Laws to Rule 30 – Weight of Boats	145
APPENDIX R4	
Bye-Laws to Rules 31 to 33 – Regatta Courses	147
Appendix R5	
Bye-Laws to Rules 35-37 – Regatta Roles	155
APPENDIX R6	
Bye-Laws to Rule 38 – Commercial Publicity, Sponsorship, Advertising and Identifications	161
APPENDIX R7	
Bye-Laws to Rule 57 – World Rowing Progression System	171
APPENDIX R8	
Bye-Laws to Rule 62 – Time Trials	189
APPENDIX R9	
Bye-Laws to Rules 81 to 84 – Duties of the Jury	193
APPENDIX R10	
Bye-Laws to Rule 85 – Anti-Doping	197
APPENDIX R11	
Olympic Games and Olympic Qualification Regattas Regulations – Event Regulations and/or Departures from the World Rowing Rules of Racing	255
APPENDIX R12	
World Rowing Championships Regulations – Event Regulations and/or Departures from the World Rowing Rules of Racing	257
APPENDIX R13	
World Rowing Cup Regattas Regulations – Event Regulations and/or Departures from the World Rowing Rules of Racing	259

APPENDIX R14	
Para Rowing Competition Regulations – Event Regulations and/or Departures from the World Rowing Rules of Racing	273
APPENDIX R15	
Para Rowing Classification Regulations – Event Regulations and/or Departures from the World Rowing Rules of Racing	279
APPENDIX R16	
World Rowing Masters Regatta Regulations – Event Regulations and/or Departures from the World Rowing Rules of Racing	303
APPENDIX R17	
World Rowing Tours Regulations – Event Regulations and/or Departures from the World Rowing Rules of Racing	307
APPENDIX R18	
Coastal Rowing Competition Regulations – Event Regulations and/or Departures from the World Rowing Rules of Racing	309
Appendix R19	
Beach Sprint Rowing Regulations – Event Regulations and/or Departures from the World Rowing Rules of Racing	331
APPENDIX R20	
Indoor Rowing Competition Regulations – Event Regulations and/or Departures from the World Rowing Rules of Racing	343
APPENDIX R21	
Event Bidding and Preparation Regulations – Event Regulations and/or Departures from the World Rowing Rules of Racing	355

Rule Changes

Who proposes?

MEMBERS

Who decides?

CONGRESS or GENERAL ASSEMBLY

Who applies?

THE 'ROWING BODY' CONCERNED & THE JURY/JURIES

When?

POST OLYMPIC YEAR

Rule Changes - REMARK

Bye Laws

CAN BE CHANGED BY THE WR COUNCIL / ER BOARD

Who applies?

THE 'ROWING BODY' CONCERNED & THE JURY/JURIES

When?

FROM THE MOMENT ONWARDS OF THE DECISION

Example: ADVERTISING

NATIONALITY

UNDER 19

DOMICILE

UNDER 23 & OLDER

DECISION – IF DESIRE TO CHANGE: 2 YEARS WAITING TIME

WORLD ROWING CUPS

NO SPECIFIC RULES: RELATED TO THE CLUB

OLYMPIC GAMES

OLYMPIC CHARTER APPLIES

ENTRIES

WHO?

MEMBER FEDERATION

HOW?

ONLINE

LIMIT?

BEFORE THE SPECIFIED DEAD LINE (9 to 14 days before event)

SPARES?

CAN BE CONFIRMED BY MF WHEN ENTERING CREWS

CREW CHANGES

WHO?

MEMBER FEDERATION or TEAM MANAGER

HOW?

SPECIFIC FORMS AVAILABLE AT WR REGATTA OFFICE

LIMIT?

BEFORE THE EVENT : 3 HOURS

IN CASE OF ILLNESS : 1 HOUR

NUMBER?

BEFORE EVENT : CREWS – MAX. 50% ROWERS + COXSWAIN

IN CASE OF ILLNESS : THE ATHLETE(S) CONCERNED

WITHDRAWALS

WHO?

MEMBER FEDERATION or TEAM MANAGER

HOW?

SPECIFIC FORMS AVAILABLE AT WR REGATTA OFFICE

LIMIT?

BEFORE THE DRAW : 3 HOURS

IN CASE OF ILLNESS : BEFORE THE START OF THE 'ROUND'

DRAW

WHEN?

**AT TEAM MANAGERS MEETING
NORMALLY THE DAY BEFORE THE FIRST RACES**

HOW?

**LIVE OR ONLINE
FIRST FINAL ROLL CALL TO CHECK BEFORE DRAW**

REMARKS

AT WRCH, WR Cups & ERCH : SEEDING (see next slide)

SEEDING PANEL

WHO?

TEAM OF 'EXPERTS' APPOINTED BY EXECUTIVE COMMITTEE (WR) or BOARD (ER)

PRINCIPLES

TO SPLIT THE 'STRONGEST' CREWS IN THE FIRST ROUND. DEPENDING ON NUMBER OF HEATS, LIST OF TOP X (X=N° of heats x2) IS ESTABLISHED.

EXAMPLE: 3 HEATS = 6 SEEDED CREWS (#1+#6/#2+#5/#3+#4).

RANDOM DRAW IN SPECIFIC HEAT.

NO ORDER IN HEATS.

REMARKS

NEW COMPOSITION = NEW CREW = NO PAST RESULTS

ATHLETES WEIGHING

TEST WEIGHING

SCALES AVAILABLE AT LEAST 24 H BEFORE 1ST DAY RACING

PRINCIPLES

INDIVIDUAL AND AVERAGE CREW MAX.WEIGHTS.

SCALE READING LIMITED TO 0,1KG.

WEIGHING IN RACE UNIFORM.

BETWEEN 2 AND 1 HOUR BEFORE THE START.

**WEIGHING ORDER: IF ALL PRESENT = LANE ORDER,
ALL ROWERS OF SAME CREW AT SAME TIME.**

REMARKS

SPARE ROWER(S) CAN BE WEIGHED IN WITH CREW

SAFETY

BOW BALL

QUICK RELEASE FOOT STRETCHERS

BLADES

NATIONAL COLOURS ON BOTH SIDES

ADVERTISING

SEE NEXT SLIDE

MINIMUM WEIGHT

SEE NEXT SLIDE + 1.

MATERIAL - ADVERTISING

Boat Identification – 4x sample



- With the exception of the production plaque (Bye-Law to Rule 28), no other identification of the manufacturer is allowed on the inside of racing boats.
- Identifications on all equipment items and fittings in the boat must be identical within the crew.



Place	Identification Type	1x	2x, 2-, 2+	4x, 4-, 4+	8+
Each Side of Boat	WorldRowing Sponsor + Federation Abbreviation	First 80 cm of the shell in the section occupied by rowers Reserved for WorldRowing		First 100 cm of the shell in the section occupied by rowers Reserved for WorldRowing	
	Federation/Club Sponsor	1 time max 800 cm ²	2 times, each max 600 cm ² (max total 1200 cm ²)	4 times, each max 600 cm ² (max total 2400 cm ²)	8 times, each max 600 cm ² (max total 4800 cm ²)
		<ul style="list-style-type: none"> • In the section occupied by rowers • The name of the boat shall be considered as a sponsor identification • Each sponsor identification on the side of the boat shall be positioned apart from the WorldRowing identification. • Sponsor identifications may be combined into one or more larger identifications subject to the total area of the resulting identifications not exceeding the total area of all permitted sponsor identifications on that side of the boat • The sponsor identifications may be different, including on each side of the boat • Within one sponsor identification, several different sponsors may be displayed. Number of sponsors within identification space is not limited, only the size is limited. 			
	Manufacturer	100 cm ² in the section of the boat occupied by rowers			
	Manufacturer	Symbol of manufacturer 80 cm ² no text, on first 50 cm from the bow			
Deck	Federation/Club Sponsor	800 cm ² on the fore deck + 800 cm ² on the aft deck no need to be identical			
Riggers	Manufacturer	16 cm ² on each rigger			
Fin	Manufacturer	16 cm ² on each side of fin			
Swivel	Manufacturer	8 cm ² once <u>or</u> 4 cm ² once on each side, identical			
Shoes / Quick Release	Manufacturer	Shoes and the quick release may carry the identification of the manufacturer as generally used on products sold through retail trade during the prior 6 months.			
Seat	Manufacturer	6 cm ² per seat			

Oars Identification – Sculling sample



Place	Identification Type	Sculling Oar	Sweep Oar
Outboard	No identifications are allowed on the outboard section		
Inboard	Manufacturer	60 cm ²	
	Federation/Club Sponsor	72 cm ²	100 cm ²

- The color and design of the blades of all sculls and oars must be identical on both sides, but manufacturer can be different.
- Identifications on sculls and oars must be identical within a crew.
- Discrete markings that identify the boat, the place and the owner are allowed.

BOAT WEIGHING (1)

TEST WEIGHING

SCALES AVAILABLE AT LEAST 24 H BEFORE 1ST DAY RACING ALLOWED DURING COMPETITION (PRIORITY TO BOATS TO WEIGH AFTER THE RACE).

PRINCIPLES

SCALE READING LIMITED TO 0,1KG.

The minimum weight of the boat shall include the fittings essential to its use, in particular: riggers, stretchers, shoes, slides, seats and hull extensions.

It shall also include:

- a. *Loud speakers if they are firmly fastened to the boat and associated wiring for such speakers;*
- b. *Any housings or fixings that are firmly fastened to the boat for the purpose of holding water bottles, electronic or other equipment;*
- c. *Cables and wires required to connect equipment to provide "Allowable Data" (see Bye-Laws to Rule 28); and*
- d. *Seat Pads that are attached to the seat.*

BOAT WEIGHING (2)

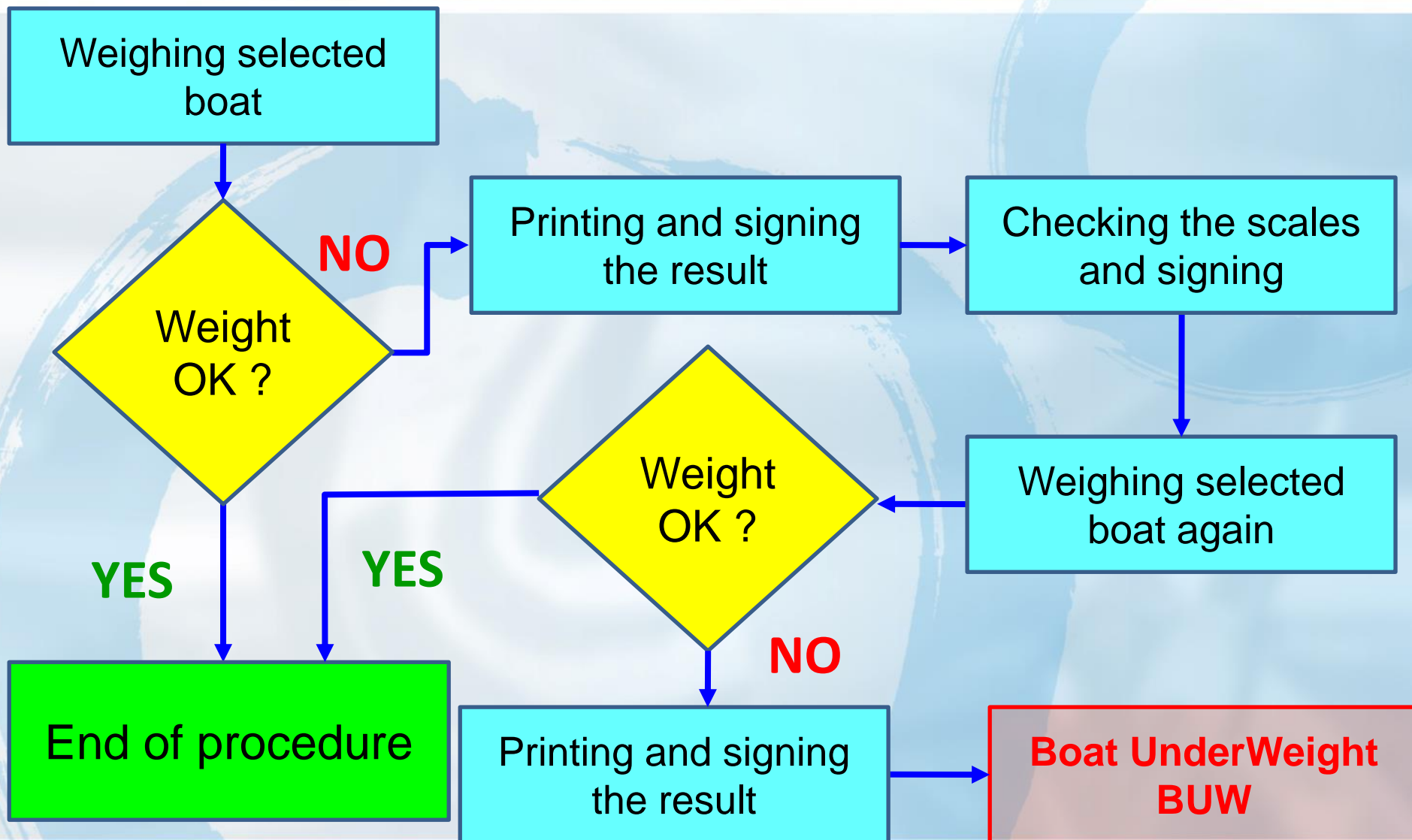
PRINCIPLES (2)

The minimum weight of the boat shall include the fittings essential to its use, in particular: riggers, stretchers, shoes, slides, seats and hull extensions.

It shall also include:

- a. *Loud speakers if they are firmly fastened to the boat and associated wiring for such speakers;*
- b. *Any housings or fixings that are firmly fastened to the boat for the purpose of holding water bottles, electronic or other equipment;*
- c. *Cables and wires required to connect equipment to provide "Allowable Data" (see Bye-Laws to Rule 28); and*
- d. *Seat Pads that are attached to the seat.*

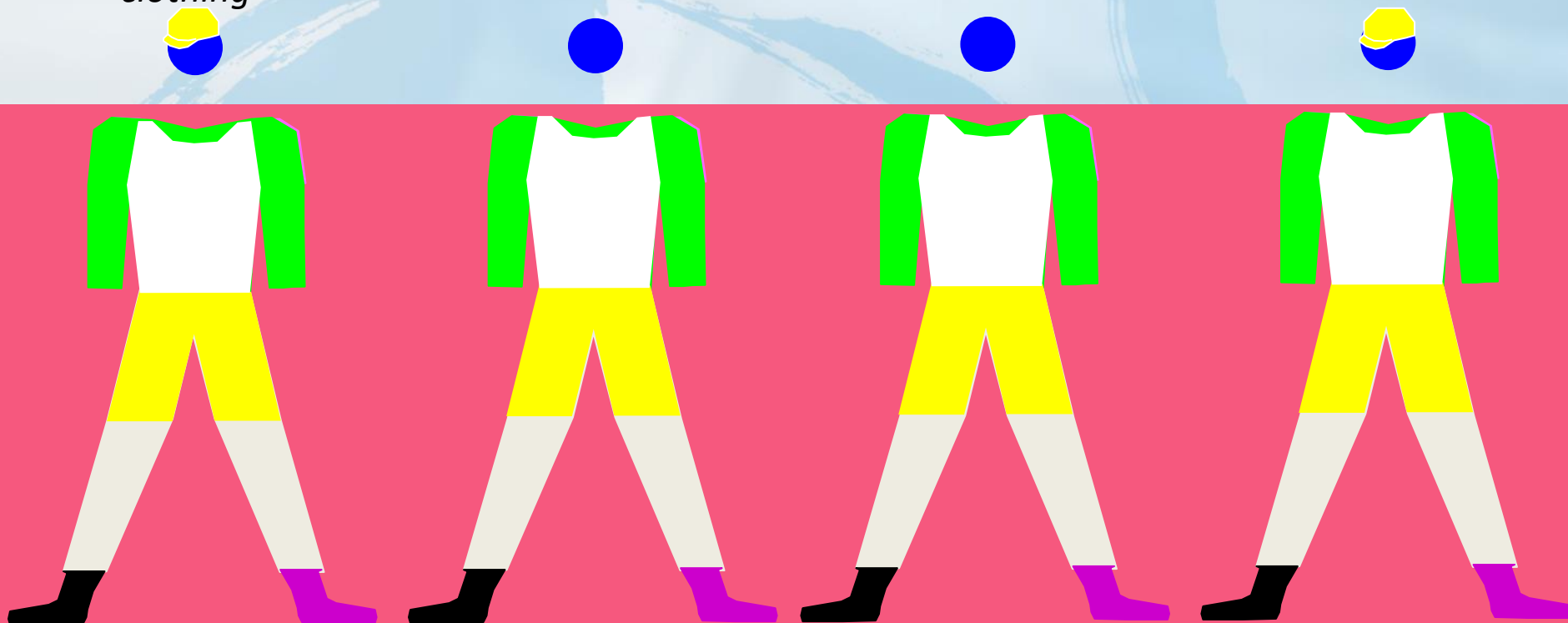
BOAT WEIGHING (3)



ATHLETES - UNIFORMITY

WRCH & WRCups

Clothing and Blade Colours – Members of the same crew shall compete in identical clothing



Rigorous uniformity

ATHLETES - UNIFORMITY

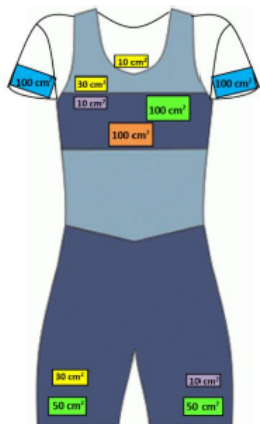
INTERNATIONAL REGATTA

*Clothing and Blade Colours – Members of the same crew **may** compete in identical clothing or use their won club uniform/blade.*



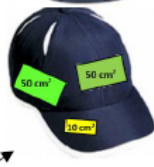
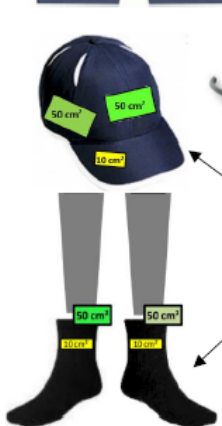
Rigorous uniformity

Clothing/Eyewear identification



If WorldRowing does not require a T-shirt, all crew members may wear a T-shirt of the same sleeve length, color, and design under the racing shirt provided only:

- manufacturer identification of not more than 10 cm², any position except on the sleeve,
- non-commercial ID once on each sleeve of WorldRowing T-shirt from previous regatta,
- national identity



The manufacturer and sponsor may be different as long as the color, design (including length), position of identifications are identical within a crew.

One Sponsor on sock or leg coverings, but not both

Shoes are personal equipment; no restrictions as to manufacturer and color



	WorldRowing Identification	Federation/ Club Name	Federation/Club Sponsor	Manufacturer	Product Technology
Shirt (singlet, sleeveless shirt, or equivalent; uniform within crew)		Once on the front, max 100 cm² (may include name of specific event)	Once on front, max 100 cm²; Vertically on each side, max 80 cm² each (sides may be different, but uniform within crew)	Once on the front, max 30 cm²	Once, max 10 cm²
T-shirt	Once per sleeve, max 100 cm² Reserved for WorldRowing			Once, max 10 cm², (not positioned on the sleeve) if not provided by WorldRowing	
Short (or equivalent)			One side or both sides, max 50 cm² each (legs may be different, identical in crew)	Once, max 30 cm²	Once, max 10 cm²
Headwear (identical in color, design, position of identifications within crew)			Twice, max 50 cm² each (may be different among crew members)	Once, max 10 cm² (manufacturer may be different among crew members)	
Eyewear (individual equipment, may be different on each athlete)				Once per arm, max 3 cm² each (identical); OR once on one arm, max 6 cm²; nothing on lenses	
Socks or Leg Coverings (incl. pressure stockings) (identical in length, color, design, position of identifications within crew)			Once on sock or on leg covering (not both), max 50 cm² each (may be different among crew members and be different on each leg)	Once per sock/leg covering, max 10 cm² each (manufacturer may be different among crew members, but must be identical on individual rower)	
Shoes and Quick Release	Considered personal equipment. Rowers may wear shoes of a different color and manufacturer in the boat. At WorldRowing events, shoes and the quick release may carry the identification of the manufacturer as generally used on products sold through retail trade during the prior 6 months.				

National ID: no limit in space, if on uniform it must be part of official design approved by WorldRowing (Rule 39), incl. national colors, country name or acronym, national flag, internationally recognized national symbols

Additional clothing must be identical unless specifically provided. Coxswains may race in additional clothing as long as in the colors of the crew.

Except for state lotteries that are owned or operated on behalf of a state authority, the advertising of any form of betting, gambling, gaming or lottery competition involving wagering or something of value on an outcome is prohibited. Advertising or sponsorship of any organization conducting such activity also prohibited. Advertising of tobacco and cigarette products and strong liquor (>15% alcohol) is prohibited. On U19 events advertising of alcohol is prohibited.

THE RACE – WEATHER (1)

FAIRNESS COMMITTEE

TEAM OF 'EXPERTS' APPOINTED BY EXECUTIVE COMMITTEE (WR) or BOARD (ER)

DUTIES

**TO MONITOR WEATHER CONDITIONS.
TO EVALUATE WEATHER FORECAST(S).
TO DECIDE ON THE LANES TO USE OR OTHER MEASURES**

REMARKS

DECISIONS TO BE IMPLEMENTED BY THE JURY

ORDER OF DECISIONS

1. USE LANES WITH SAME CONDITIONS
2. POSTPONE RACING
3. BRING FORWARD RACING
4. SUSPEND RACING
5. BEST CREWS OF PRECEEDING ROUND IN BEST LANES (*)
6. SHORTEN DISTANCE
7. TIME TRIAL IN 1 or 2 LANES

(*) with draw between equal 'ranked' crews

THE RACE – THE START

TYPES

1. WITH ROLL CALL

1. > 5 min
2. 5 min – 2 min
3. 2 min

2. WITHOUT ROLL CALL “ QUICK START “

START ZONE

100 meter zone

RIGHTS AND DUTIES OF CREWS

- 1. RIGHT TO THE ASSIGNED LANE**
- 2. CREW CAN LEAVE THEIR LANE ON CONDITION THAT:**
 - 2.1. NO OBSTRUCTION TO OPPONENTS**
 - 2.2. NO ADVANTAGE TO THEMSELVES**
- 3. RIGHT TO OBJECT ANY RACE SITUATION OR ANY DECISION (NOT) TAKEN BY WHATEVER JURY MEMBER**
- 4. ONCE AN OBJECTION IS INTRODUCED THE JURY MEMBER NEEDS TO ANNOUNCE A DECISION (WITHOUT TIME RESTRICTIONS)**

ANALYSIS AFTER AN OBJECTION

Has a crew been disadvantaged?

No

Regular race !

No

Confirm the result !

No

**“Rerow” between those crews,
whose ranking has been affected.**

Yes

*Has the disadvantage affected the
ranking of the obstructed crew?*

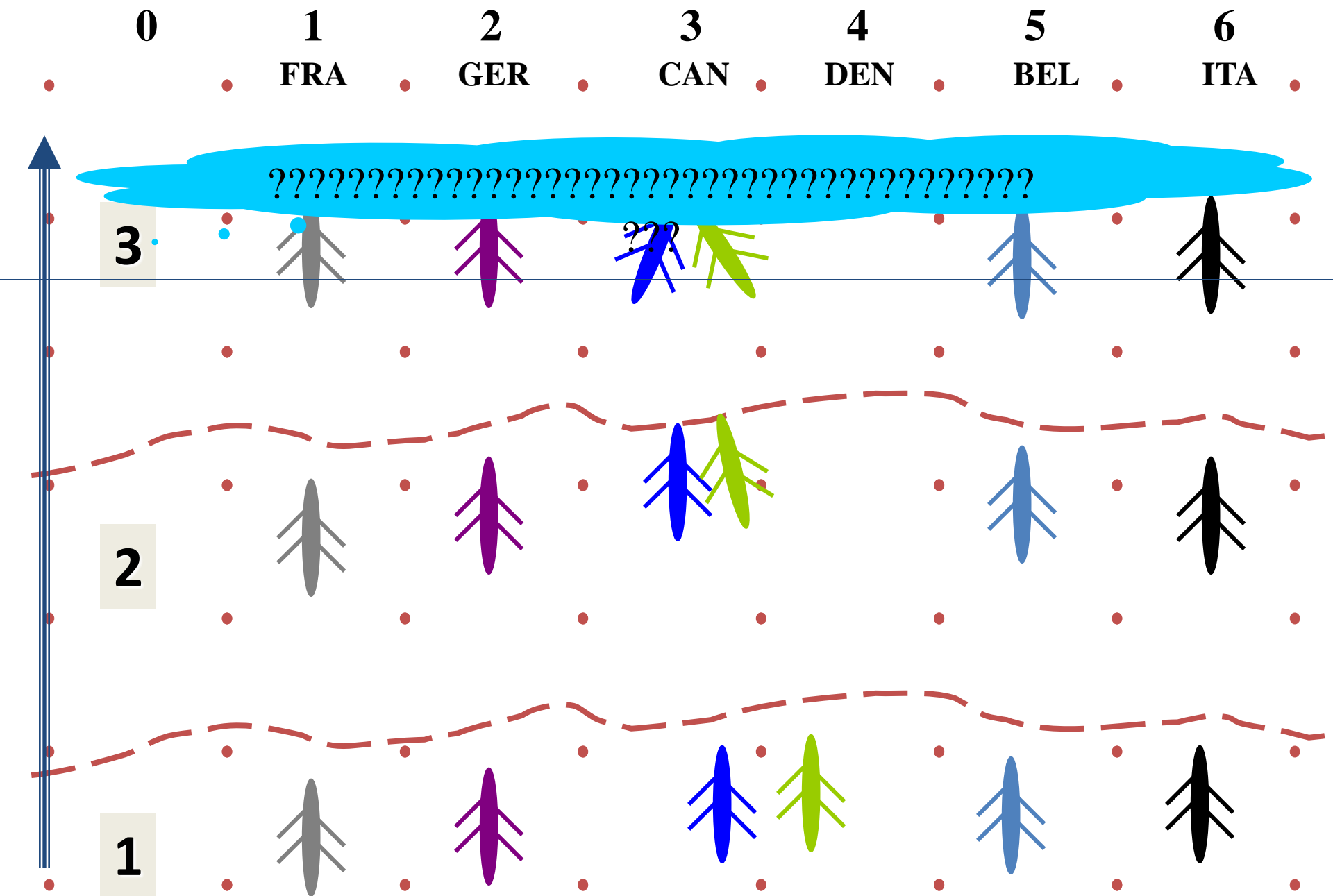
Yes

Exclusion of the obstructing crew

*Will this exclusion give back the
chances to the obstructed crew?*

Yes

Confirm the result !



NO PENALTY

RESULT OK

1 CAN

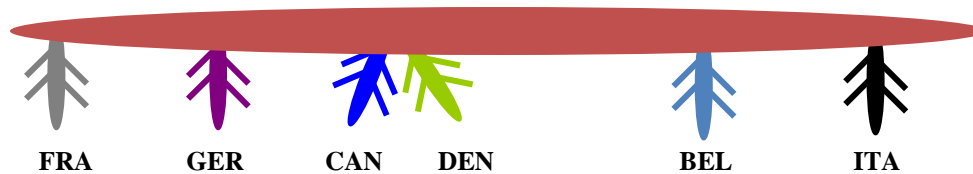
2 DEN

3 BEL

4 GER

5 FRA

6 ITA



DEN EXCLUDED

CAN 1st , etc.

1 DEN

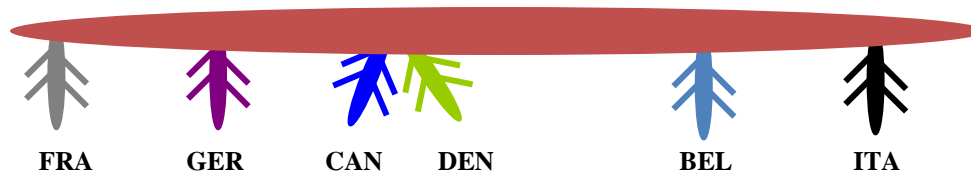
2 CAN

3 BEL

4 GER

5 FRA

6 ITA



1 DEN

2 BEL

3 GER

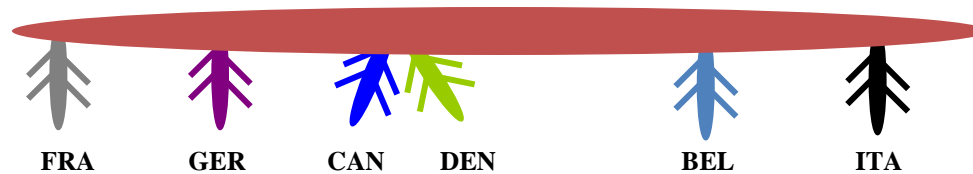
4 FRA

5 CAN

6 ITA

DEN EXCLUDED

REROW BEL-GER-FRA-CAN



THE RACE – THE FINISH

PROCEDURE

1. ORDER BOW NUMBERS CROSSING FINISH LINE
2. MATCHING CREW NAMES WITH BOW NUMBERS
3. CHECKING FINISH TIMES ON PHOTO FINISH (ALWAYS AT WR/ER)
4. CONTROL OF INTERMEDIATE TIMES (IF ANY)
5. CHECKING PROGRESSION SYSTEM – (NON)QUALIFIED CREWS

DEAD HEAT

WHEN NO DIFFERENCE CAN BE IDENTIFIED BETWEEN 2 OR MORE CREWS – CONSEQUENCE: DEPENDING ON “THE SITUATION”

PRINCIPLES

1. DIFFERENT CASES, DEPENDING OF N° OF PARTICIPANTS

< 6	21-24
7-8	25-30
9-10	31-36
11-12	37-40
13-15	41-48
16-18	> 48
19-20	

2. BASED ON RANKING, NOT ON TIMING (except WORLD CUP)

3. IF OPTIONS (ALWAYS 2) CHOICE FOR MOST "BALANCED"

4. SEEDED CREWS ARE NOT TAKEN IN ACCOUNT

PROGRESSION SYSTEM (2)

Table for World Rowing Championships Case 4: 13 to 15 entries

Heats	Repêchage	Semi-final Options		Finals			
H	R	S AB I	S AB II	F			
<div>H1</div> <div>1</div> <div>2</div> <div>3</div> <div>4</div> <div>5</div>	R	S AB 1	S AB 1	FA	1S AB 1		
<div>H2</div> <div>1</div> <div>2</div> <div>3</div> <div>4</div> <div>5</div>					1H1	1H1	1S AB 2
					1H3	1H2	2S AB 1
					2H2	2H3	2S AB 2
					3H3	3H2	3S AB 1
					2R	1R	3S AB 2
3R					3R		
<div>H3</div> <div>1</div> <div>2</div> <div>3</div> <div>4</div> <div>5</div>		S AB 2	S AB 2	FB	4S AB 1		
					1H2	1H3	4S AB 2
					2H1	2H1	5S AB 1
					2H3	2H2	5S AB 2
					3H1	3H1	6S AB 1
					3H2	3H3	6S AB 2
				1R	2R	FC	4R
							5R
			6R				

4 JUDICIAL STEPS

1. OBJECTION

CREW

2. PROTEST

TEAM MANAGER

3. APPEAL

TEAM MANAGER

4. COURT OF ARBITRATION OF SPORT

MEMBER FEDERATION

OBJECTION

- 1. TO A JURY MEMBER**
- 2. BY RAISING THE ARM or ORAL (PARA – ROWING)**



PROTEST

- 1. TO THE PRESIDENT OF THE JURY**
- 2. WRITTEN**
- 3. € 100**
- 4. ANALYSIS AND DECISION BY BOARD OF THE JURY**
= 3 JURY MEMBERS (P of J + 2 JURY MEMBERS NOT INVOLVED)
- 5. WRITTEN REPORT ON DECISION**

APPEAL

- 1. TO WORLD ROWING EXECUTIVE COMMITTEE**
- 2. WRITTEN**
- 3. € 100**
- 4. ANALYSIS AND DECISION BY WR EXECUTIVE COMMITTEE**
- 5. WRITTEN REPORT ON DECISION**
- 6. FINAL DECISION WITHIN WORLD ROWING**

APPEAL TO COURT OF ARBITRATION OF SPORTS

- 1. TO C.A.S. (Lausanne)**
- 2. WRITTEN**
- 3. WITHIN 3 WEEKS AFTER APPEAL DECISION OF WR**
- 4. ENQUIRY AND HEARING**
- 5. WRITTEN REPORT ON DECISION**
- 6. FINAL DECISION WITHIN “WORLD OF SPORT”**

ROLE OF JURY

1. HELPING TO IDENTIFY THE ATHLETES, CHOSEN FOR CONTROL

TYPES

1. OUT OF COMPETITION
2. AT COMPETITION

ADA's

1. WADA
2. ITA
3. NADA

ACTUAL SITUATION

MIDDLE LANES ALLOCATED TO BEST CREWS OF PREVIOUS ROUNDS, ETC.

PROJECT

TO ALLOW THE CREWS TO ALLOCATE THE LANE BY THEMSELVES

PRIORITY TO BEST RANKED OF PREVIOUS ROUND

LOT OF TECHNICAL AND PRACTICAL ISSUES TO BE SOLVED

ACTUAL SITUATION

CALM AND SILENT IN START AREA – ONLY STARTER’S VOICE

PROJECT

MORE INTERACTIVE INTRODUCTION OF THE CREWS

BETWEEN 2 MINUTES AND 40 SECONDS BEFORE THE START

PUBLIC APPLAUS TO BE HEARD IN START AREA AND POSSIBLE REACTIONS FROM THE CREWS

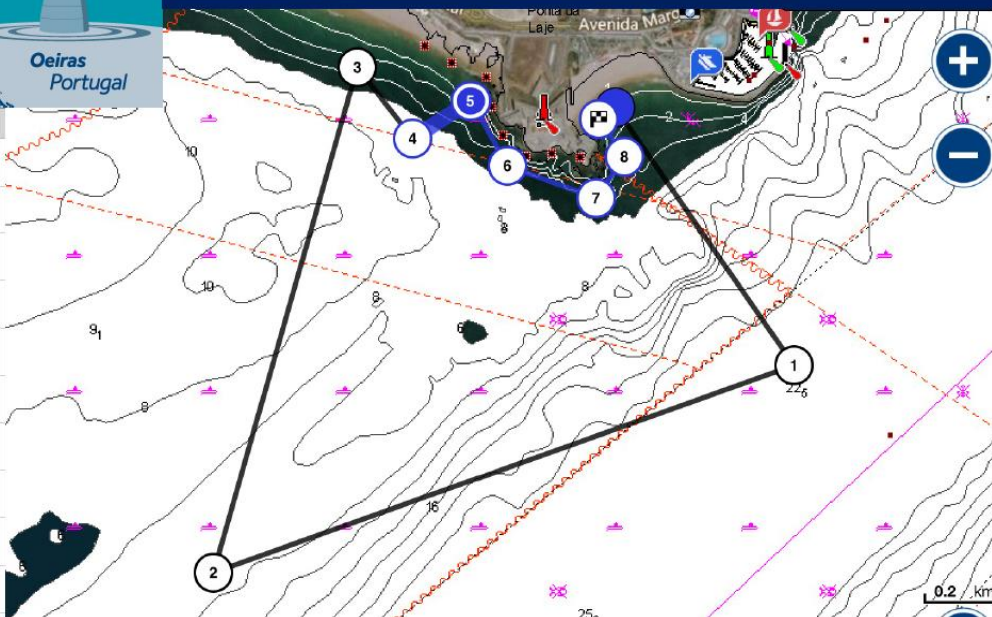
2 TYPES

1. ENDURANCE



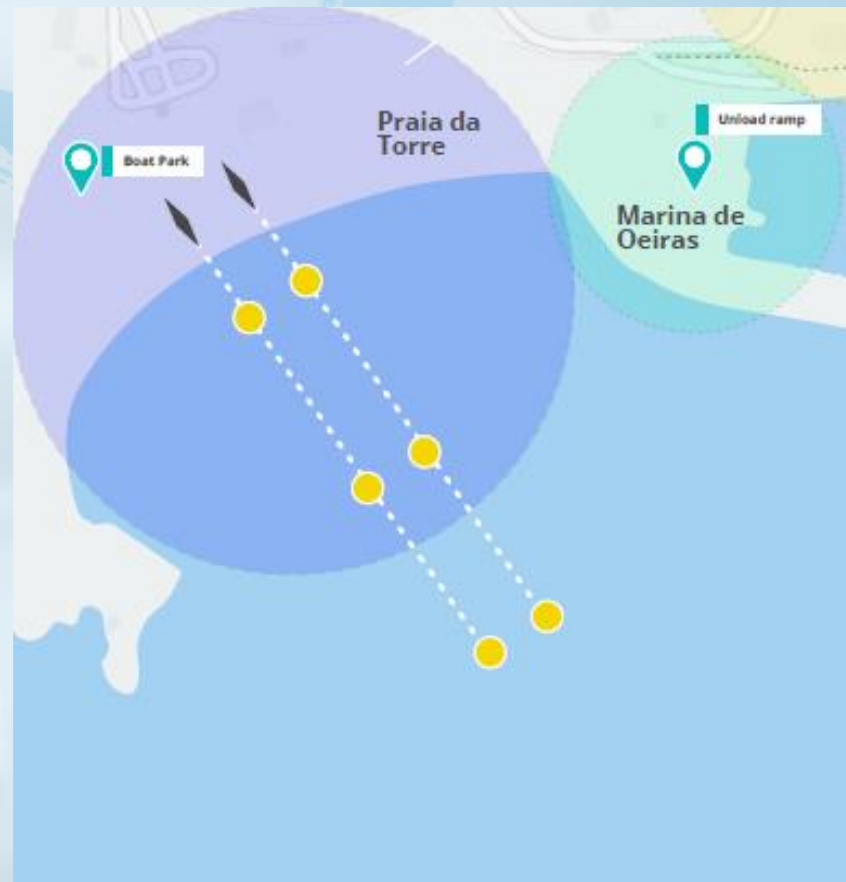
6k	Distances	Position
Start		38° 40.489' N 9° 19.363' W
TP1	1,0k (1,0k)	38° 40.055' N 9° 18.976' W
TP2	1,9k (2,9k)	38° 39.705' N 9° 20.233' W
TP3	1,6k (4,5k)	38° 40.556' N 9° 19.921' W
TP4	0,3k (4,8k)	38° 40.437' N 9° 19.800' W
TP5	0,2k (5k)	38° 40.500' N 9° 19.676' W
TP6	0,3k (5,3k)	38° 40.371' N 9° 19.623' W
TP7	0,2k (5,6k)	38° 40.322' N 9° 19.401' W
TP8	0,2k (5,8k)	38° 40.405' N 9° 19.343' W
Finish	0,2k (6k)	38° 40.405' N 9° 19.343' W

6K RACE COURSE



2 TYPES

2. BEACH SPRINT



COASTAL - ENDURANCE

BOOSTING ROWING FORMAT WITH A LOT OF POTENTIAL

NEW MEMBERS

NEW LOCATIONS

NEW KIND OF ROWERS

OLYMPIC FUTURE ?

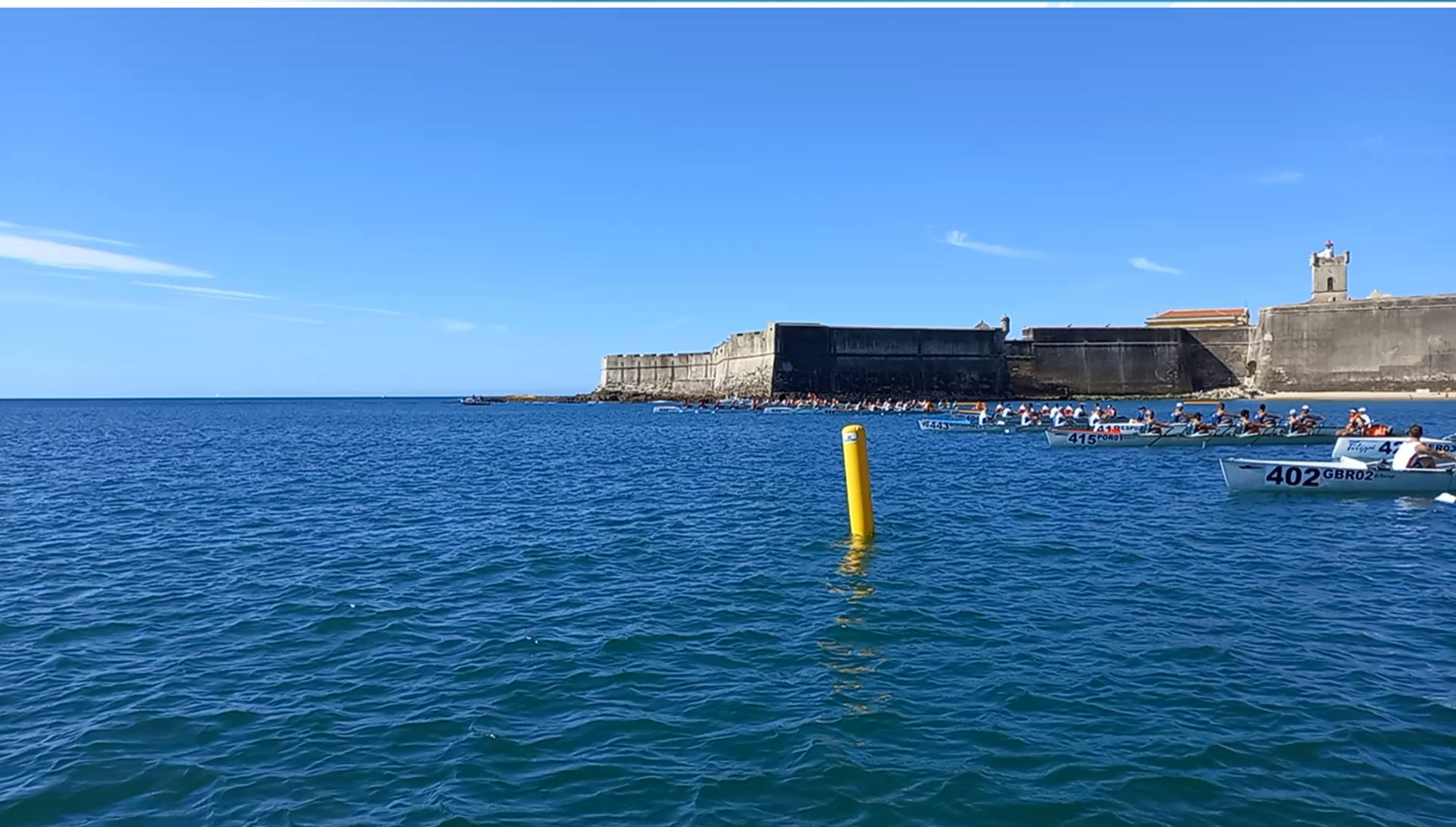
A LOT OF CHALLENGES

QUICK EVOLUTION

STILL BASIC RULES WITH A LOT OF "GAPS":

- **FALSE STARTS**
- **OBSTRUCTIONS**
- **MATERIAL**
- **COMMUNICATION**
- **QUALIFICATION ON TIME**
- **TECHNICAL EQUIPMENT**

COASTAL - ENDURANCE





COASTAL - ENDURANCE



COASTAL – BEACH SPRINT



COASTAL – BEACH SPRINT



The future



World Rowing Cup	1	BELGRADE	SRB
	2	POZNAN	POL
	3	LUZERN	SUI
WRCH		RACICE	CZE
WRJCH		VARESE	ITA
WRU23CH		VARESE	ITA
WR Masters Regatta		LIBOURNE	FRA
WR Beach Sprint Finals & WRCCH		SAUNDERSFOOT	GBR
FISU WORLD UNIVERSITY SUMMER GAMES		CHENGDU	CHN
ERCH		MUNICH	GER
ERU23CH		HAZEWINKEL	BEL
ERJCH		SABAUDIA	ITA

World Rowing Cup	1	ZAGREB	CRO
	2	VARESE	ITA
	3	LUZERN	SUI
WRCH		BELGRADE	SRB
WRJCH		PARIS	FRA
WRU23CH		PLOVDIV	BUL
WR Masters Regatta		PRETORIA	RSA
WR Beach Sprint Finals & WRCCH		SABAUDIA	ITA
ERCH		BLED	SLO
ERU23CH		ROSTOV-ON-DON	RUS
ERJCH		BRIVE-LA-GAILLARDE	FRA

World Rowing Cup	1	T B A	(2021)
	2	MUNICH	GER
	3	LUZERN	SUI

WRCH	ST.-CATHARINES	CAN
------	----------------	-----

WRJCH	ST.-CATHARINES	CAN
-------	----------------	-----

WRU23CH	ST.-CATHARINES	CAN
---------	----------------	-----

WR Masters Regatta	BRANDENBURG	GER
--------------------	-------------	-----

WR Beach Sprint Finals & WRCCH	T B A	(2021)
-----------------------------------	-------	--------

ERCH	SABAUDIA	ITA
------	----------	-----

ERU23CH	DUISBURG	GER
---------	----------	-----

ERJCH	MINSK	BLR
-------	-------	-----

Future challenges

2024 & 2028 Olympic Programme

2028 Olympic Rowing Course

New formats – events

**Inclusion of rowing in
Continental/Regional Games**

REMINDER

Top Priority:

*«Maintain Rowing's Strong position
in the Olympic Movement»*

DECISION OLYMPIC PROGRAM 2024

2024 Olympic rowing events = 2020

M 1X	W1X
M2X	W2X
M4X	W4X
M2-	W2-
M4-	W4-
M8+	W8+
LM2X	LW2X

“seats” at og 2024 = 502 (OG 2020 = 526 – OG 2016 = 550)

DISCUSSION OLYMPIC PROGRAM 2028

No more Lightweights

M 1X	W1X
M2X	W2X
M4X	W4X
M2-	W2-
M4-	W4-
M8+	W8+
LM2X	LW2X

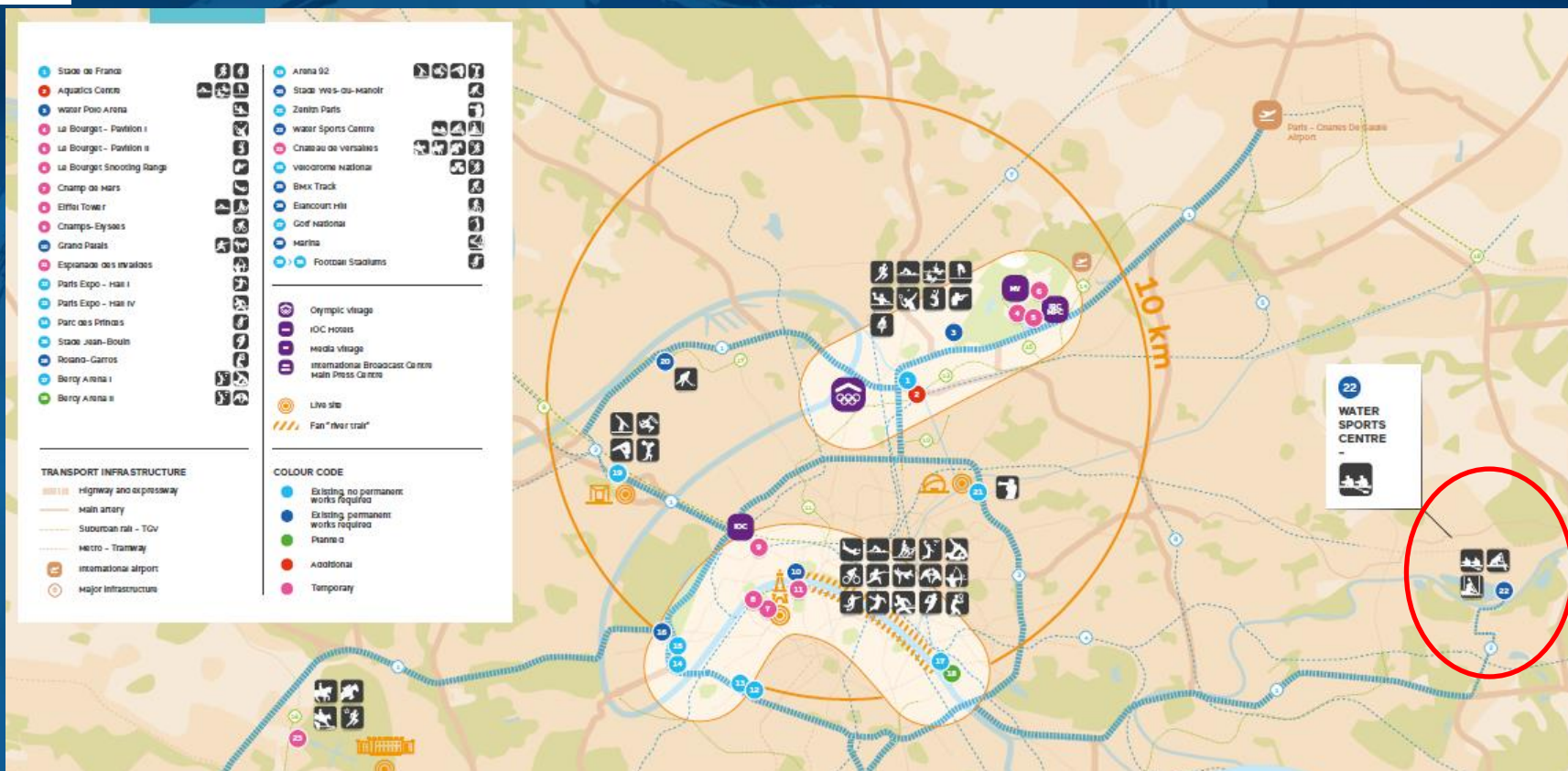
Proposal to be replaced by Coastal events:

Beach Sprint has the preference

3 events in discussion: M1X – W1X – Mix2X

14 -> 15 events (and same n° of athletes)

✓ Paris





Paris

3. The venue: Water Sports Centre

Status	Existing
Capacity	10,000
Travel time to the Village	45'
Travel time to the IOC/IPC Hotel	50'

Highlights

- An existing, world-class facility;
- A venue offering unique operational efficiencies to Rowing;
- A venue fully compliant with IF technical requirements and permitting ITO accommodation on site;
- Perfectly equipped to offer inspiring and engaging sport presentation for athletes, spectators, media and the Olympic/Paralympic Family;

- A venue location easily accessible thanks to an efficient, reliable transport system.

Following the Paris 2024 presentation to FISA and the constructive feedback received, our team is working to enhance the concept and fully meet the sport requirements. Paris 2024 looks forward to a continued dialogue with the FISA and the French Rowing Federation, and will endeavour to present a comprehensive proposal by Bid File 3 (February 2017).



Water Sports Center – Aerial view

© Département de la Seine-Saint-Denis, Service du patrimoine culturel



Opening 2019 !



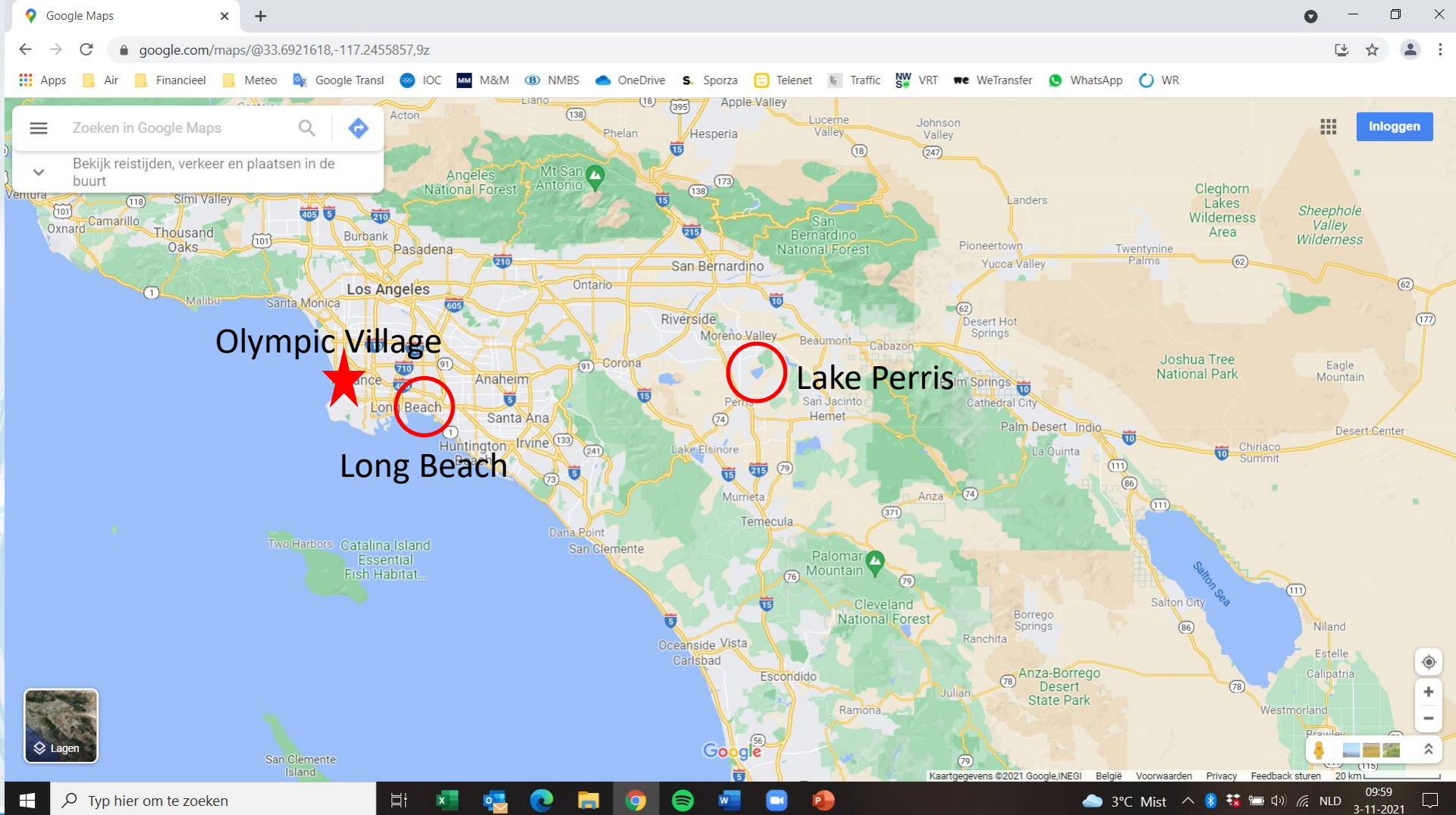
2028 & 2032 Olympics

✓ 2028 : LOS ANGELES

✓ 2032 : BRISBANE



2028 Olympic Regatta Course



2028 Olympic Regatta Course

Google Maps

google.com/maps/@33.8565413,-117.1934006,13z

Apps Air Financieel Meteo Google Transl IOC M&M NMBS OneDrive Sporza Telenet Traffic NW VRT WeTransfer WhatsApp WR

Zoeken in Google Maps

Bekijk reistijden, verkeer en plaatsen in de buurt

ORANGECREST

In-N-Out Burger

March Air Reserve Base

General Old Golf Course

Ben Clark Public Safety Training Center

Covell St

Nandina Ave

Markham St

Alexander St

Cajalco Rd

Mead Valley

Rancho las Palmas Perris Ca

The Salvation Army Thrift Store &...

Perris Reservoir

Bernasconi Beach

Lakeview

Upland Game Hunting Area

San Jacinto Wildlife Area

Mystic Lake

Loggen

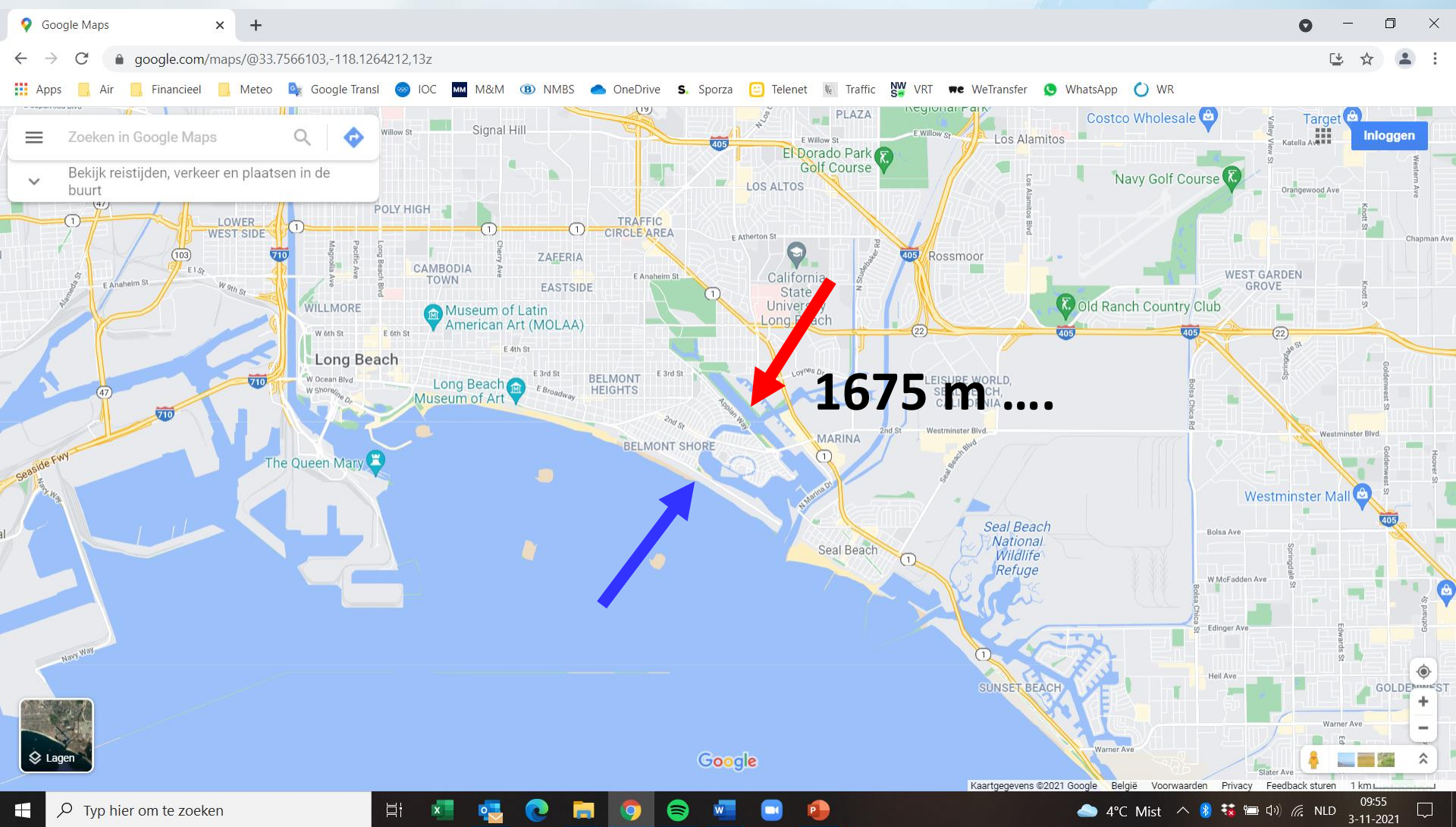
Zoomen

Schuijfregelaar weergeven

Kaartgegevens ©2021 België Voorwaarden Privacy Feedback sturen 1 km

4°C Mist 09:57 3-11-2021

2028 Olympic Regatta Course



2028 Olympic Regatta Course



AGENCE
MONDIALE
ANTIDOPAGE

WORLD
ANTI-DOPING
AGENCY

NEWS RELEASE / COMMUNIQUÉ

**WADA NAMES RICHARD MCLAREN TO SOCHI
INVESTIGATION TEAM**

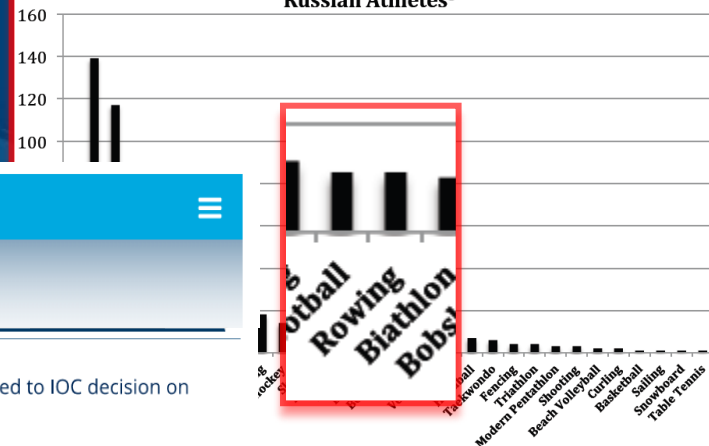
WADA commission member brings greater inde

Montreal, 19 May 2016 – Today the WADA President, Sir Craig Reedie, appointed Richard H. McLaren as the independent person heading the Sochi investigation announced by the Agency yesterday. Professor McLaren is tasked with investigating allegations made in relation to the 2014 Sochi Olympics, which were published in *Minutes* and *The New York Times* on 8 and 12 May respectively.



First Stage of FISA Executive Committee decision related to IOC decision on Russian participation in Rio 2016
25 JULY 2016

Number of Disappearing Positive Test Results by Sport
Russian Athletes⁵



More than 1,000 Russian athletes involved in state-sponsored doping scheme, second part of McLaren Report claims

By Liam Morgan at the St. Pancras Renaissance London Hotel
Friday, 9 December 2016

Add comment



More than 1,000 athletes across summer, winter and Paralympic sports were involved in a widespread state-sponsored doping system in Russia akin to an "institutional conspiracy", Canadian lawyer Richard McLaren has claimed when delivering the second part of his report here today.

This includes at least a total of 600 summer athletes and 95 winter athletes, the report revealed.

Medallists from London 2012, the 2013 Universiade in Kazan, the 2013 World Athletics Championships and the Sochi 2014 Winter Olympics were implicated, according to McLaren, although no names were given.

has reviewed carefully the International Olympic Committee's decision concerning the participation of Russian athletes in the Rio



Sunday, February 26 2017



Top story

WADA confirms McLaren evidence may not be sufficient to sanction some Russian athletes



The World Anti-Doping Agency has confirmed that there may be a lack of "sufficient evidence" needed to impose sanctions upon some Russian athletes identified in the McLaren Report.

Thank you!

